



Prepared Food Options

www.sub4health.com

PREPARED FOOD OPTIONS

Prepared Products:

Many kitchens rely on prepared products in today's demanding environment. Fortunately, the list of companies stepping up to fill this growing need expands near daily.

First is the Food Forward's informal list of companies and then are some companies that are approved to sell to the Department of Defense (NAPA companies) after passing country of origin, price comparison and sanitation checks. Many names on both lists you will immediately recognize!

At the end is a list of food items that appear vegetarian, and might even be vegan. Unless the name identifies that it is in fact, vegetarian, its status as a vegetarian or vegan product has not been confirmed.

NAPA VENDOR CODE NAPA VENDOR NAME NAPA DESCRIPTION

NAPA company

These are NOT available to DoD Yet

0586 ASIAN FOOD SOLUTION Vegetable Fried (Brown) Rice #78001
 0586 ASIAN FOOD SOLUTION Whole Wheat Vegetable Egg Rolls #79011
 0586 ASIAN FOOD SOLUTION Whole Grain Chow Mein #22101WG
 0586 ASIAN FOOD SOLUTION Breaded Tofu Chunks Product Code: 31001
 0586 ASIAN FOOD SOLUTION [Tangerine Tofu Chunks](#)
 0586 ASIAN FOOD SOLUTION [Whole Grain Yakisoba Noodles #22001WG](#)
 They make but need NAPA # for Whole Grain Vegetable Fried Rice; Whole
 0586 ASIAN FOOD SOLUTION Grain Yakisoba Noodles; Whole Grain Vegetable Chow Mei

0001 KRAFT BOCA 3.5 OZ MEAT ALTERNATIVE ORIGINAL VEGAN 48 BOX/CARTON CASE upc
 00759283600345 (crumbles)

Vegan items

NOT a NAPA vendor Monsoon Kitchen **Rajmah-North Indian (Punjabi) red kidney bean curry, alu chole-North Indian (Punjabi)-potatoes (alu) & garbanzo beans (chole) in a spicy onion-tomato sauce. Some call it Chana Masala.**

NOT a NAPA vendor Monsoon Kitchen Tarka Dal-North Indian dish made with yellow lentils

NOT a NAPA vendor Monsoon Kitchen Sambhar-South Indian lentils and vegetables stew

NOT a NAPA vendor Monsoon Kitchen makhni dal-creamy lentil dish made with black lentils and red kidney beans

NOT a NAPA vendor Monsoon Kitchen khatte meethe baigan-Eggplant (Baigan) sautéed in a rich, sweet and sour sauce

NOT a NAPA vendor SOL CUSINE Veggie Breakfast Patty Product Id: NFF0657635 (Vegan)

NOT a NAPA vendor SOL CUSINE Sprouted Quinoa Chia Burger Product Id: NFF1227255

NOT a NAPA vendor SOL CUSINE Organic Falafel with Tahini Sauce Product Id: NFF1803030

NOT a NAPA vendor Quorn Hot and Spicy Meatless Chikn Patties Product Id: NFF1789577

NOT a NAPA vendor Dr. Praegers Sells 7 different vegetarian maybe vegan burgers

NOT a NAPA vendor Field Roast Hand Formed Vegan Burger (very expensive)

NOT a NAPA vendor Carla Lees Nutburgers Organic Original Nut Burger

NOT a NAPA vendor The Jackfruit Company BBQ Jackfruit Meatless Entrée Product Id: NFR1807916

NOT a NAPA vendor The Jackfruit Company Curry Jackfruit Meatless Entree

NOT a NAPA vendor Beyond Meat Beef Beefy Crumble Product Id: OTF609809

NOT a NAPA vendor	Beyond Meat	Beef Plain Crumble Product Id: OTF608962
NOT a NAPA vendor	Beyond Meat	Chicken strips
NOT a NAPA vendor	Tofurky	Bologna Style Deli Slices,Product Id: NFR1221969
NOT a NAPA vendor	Gardein	Chipotle Lime Chicken Crispy Finger
NOT a NAPA vendor	Nates	Classic Flavor Meatless Meatballs
NOT a NAPA vendor	American Bean Compan	Falafal and veggie burger
NOT a NAPA vendor	Before the Butcher	Plant based chicken or beef or pork
NOT a NAPA vendor	Bushbeans Food Svc	Baked beans or Taco Fiesta black beans
NOT a NAPA vendor	Eat Just	Plant based mayo, salad dressing, cookie dough
NOT a NAPA vendor	Hungry Planet	Plant based chicken or beef egetarian Taco Filling;Mediterranean Style Hummus (CN labeled);Red Pepper
0175	JTM PROVISION CO.	Hummus;Vegetable Soup;Steel Cut Oatmeal with Brown Sugar;
NOT a NAPA vendor	MCI Foods/Los Cabos Fc	bean burrito
NOT a NAPA vendor	Maisen Vege-Protein	protein crumbles or protein fillets
NOT a NAPA vendor	VeggieLand Food Servic	Veggie burgers or chicken
NOT a NAPA vendor	Yves	Veggie Cuisine Deli Ham Veggie Slice, Product Id: OTR638614
NOT a NAPA vendor	Hilarys	Organic Apple Maple Veggie Breakfast Sausage Product Id: NFF1941145
NOT a NAPA vendor	Light Life Foods	Sausage Gimme Lean Product Id: NFR373985
NOT a NAPA vendor	Sunshine Burger Compa	Organic Falafel Patty Product Id: NFF594317

<http://www.asianfoodsolutions.com/menu22.html>

<http://www.asianfoodsolutions.com/menu22.html>

<http://www.asianfoodsolutions.com/menu22.html>

vegan per product label

vegan per product label

vegan per product label

<http://www.asianfoodsolutions.com/>

<http://monsoonkitchens.com/products/vegan-and-vegetarian-entrees/rajmah/>

<http://monsoonkitchens.com/products/vegan-and-vegetarian-entrees/alu-chole/>

<http://monsoonkitchens.com/products/vegan-and-vegetarian-entrees/tarka-dal/>

<http://monsoonkitchens.com/products/vegan-and-vegetarian-entrees/sambhar/>

<http://monsoonkitchens.com/products/vegan-and-vegetarian-entrees/makhni-dal/>

<http://monsoonkitchens.com/products/vegan-and-vegetarian-entrees/khatte-meethe-baigan/>

<https://www.foodservicedirect.com/product.cfm/p/2970739/Veggie-Breakfast-Patty.htm>

<https://www.foodservicedirect.com/product.cfm/p/21197689/Sprouted-Quinoa-Chia-Burger.htm>

<https://www.foodservicedirect.com/product.cfm/p/21383089/Organic-Falafel-with-Tahini-Sauce.htm>

<https://www.foodservicedirect.com/product.cfm/p/21383505/Hot-and-Spicy-Meatless-Chikn-Patties.htm>

<https://www.foodservicedirect.com/index.cfm/S/440/CLID/4127/N/120840/Dr-Praegers-Veggie-Burgers.htm>

https://www.foodservicedirect.com/product.cfm/p/21207802/Hand_Formed_Vegan_Burger.htm

https://www.foodservicedirect.com/product.cfm/p/21261076/Organic_Original_Nut_Burger.htm

https://www.foodservicedirect.com/product.cfm/p/21380565/BBQ_Jackfruit_Meatless_Entree.htm

https://www.foodservicedirect.com/product.cfm/p/21380564/Curry_Jackfruit_Meatless_Entree.htm

https://www.foodservicedirect.com/product.cfm/p/21266732/Beef_Beefy_Crumble.htm

https://www.foodservicedirect.com/product.cfm/p/21266731/Beef_Plain_Crumble.htm

https://www.foodservicedirect.com/product.cfm/p/2971473/Bologna_Style_Deli_Slices.htm

https://www.foodservicedirect.com/product.cfm/p/1948226/Chipotle_Lime_Chicken_Crispy_Finger.htm

https://www.foodservicedirect.com/product.cfm/p/21207812/Classic_Flavor_Meatless_Meatballs.htm

<https://americanbean.com/>

<http://btbfoods.com/contact-us/>

<https://bushbeansfoodservice.com>

<https://hungryplanet.us/>

https://www.foodservicedirect.com/product.cfm/p/2972454/Deli_Ham_Veggie_Slice.htm

https://www.foodservicedirect.com/product.cfm/p/21379772/Organic_Apple_Maple_Veggie_Breakfast_Sausage.htm

https://www.foodservicedirect.com/product.cfm/p/171250/Light_Life_Foods_Sausage_Gimme_Lean_14_Ounce.htm

https://www.foodservicedirect.com/product.cfm/p/214796/Sunshine_Burger_Company_Organic_Falafel_Patty_8_Ounce.htm

Meatless Prepared Food Products

CN Labelled (CN) or Verified Product Formulation Sheets Available

*All options are egg and dairy free (vegan) unless indicated

[Advance Pierre](#)

9990 Princeton Rd.
Cincinnati, OH 45246
(513) 874-8741
Contact [website](#)

Product Formulation Statements Available

- [Veggie Patty with Teriyaki Sauce](#)
- [HFCS Free Peanut Butter & Grape Jelly On Whole Grain Bread](#)
- [HFCS Free Peanut Butter & Grape Jelly On Whole Grain Graham Wafers](#)
- [HFCS Free Peanut Butter & Jelly Cup](#)
- [HFCS Free Peanut Butter & Grape Jelly On Whole Grain Bread, Twin Pack](#)
- [Smart Picks Peanut Butter Cup](#)
- [Peanut Butter & Jelly Cup](#)
- [Peanut Butter & Grape Jelly On Whole Grain Bread](#)
- [Peanut Butter & Strawberry Jam On Whole Grain Bread](#)
- [Peanut Butter & Grape Jelly On Whole Grain Bread, Twin Pack](#)
- [Peanut Butter & Banana On Whole Grain Bread](#)



[American Bean Company](#)

100 McGraw Drive
Edison, NJ 08837
(800) 854-2449 x123

Product Formulation Statements Available

- [Mediterranean Style Falafel](#)
- [Falafel Super Tots](#)
- [Black Bean Salsa Burger](#)



[Asian Food Solutions, Inc.](#)

2572 W. State Rd., Ste. 216
Oviedo, FL 32765
[Contact form](#)

Product Formulation Statements Available

- [Whole Grain Vegetable Fried Rice](#)
- [Whole Grain Yakisoba Noodles](#)
- [Whole Grain Vegetable Chow Mein](#)
- [Whole Grain Vegetable Egg Roll](#)



[Before the Butcher](#)

16835 Algonquin Street, Suite 382
Huntington Beach, CA 92649
(866) 375-6459

Contact [website](#)

Product Formulation Statements Available

- [Plant Meat - Chicken](#)
- [Plant Meat - Beef](#)
- [Plant Meat - Pork](#)



[Beyond Meat](#)

P.O. Box 2204
Manhattan Beach, CA 90267
(866) 756-4112

customer@beyondmeat.com

Product Formulation Statements Available

- [Beyond Beef Crumble](#)
- [Beyond Chicken Strips](#)



[Bush's Beans](#)

(888) 233-1115

Contact [website](#)

- [Taco Fiesta Black Beans](#)
- [Cajun Red Beans](#)
- [Reduced Sodium Vegetarian Baked Beans](#)
- [Reduced Sodium Black, Garbanzo, Kidney & Pinto Beans](#)



[Cal-Tropic Producers, Inc.](#)

1724 Santa Margarita Dr.

Fallbrook, CA 92028

info@caltropic.com

(760) 723-1811

- [Mountain Quest Blend + Honey Roasted Sunflower Kernels, Fruit & Protein Mix](#)
- [Tropical Adventure Mix + Honey Roasted Sunflower Kernels, Fruit & Protein Mix](#)



[Chickapea Pasta](#)

(888) 868-9968

hello@choosechickapea.com

- [Chickpea and lentil pasta \(CN labeled\)](#)



Creative Food Innovations

1601 Uvalde Street

Caldwell, ID 83605

sstory@creativefoodinnovations.com

(760) 542-8390

- [Go'Bonzo's Lightly Salted](#)
- [Go'Bonzo's Chili Citrus](#)
- [Go'Bonzo's Spicy Nacho](#)
- [Go'Bonzo's French Toast](#)
- [French Toast Go'Bonzo's](#)



Dr. Praeger's

9 Boumar Place

Elmwood Park, NJ 07407

Contact [website](#)

(877) PRAEGER

Product Formulation Statements Available

- [Edamame, shelled, bulk](#)
- [Edamame in pods, bulk](#)
- [Edamame, shelled, 3 oz. portions \(CN labeled\)](#)
- [Strawberry Sunwich, 2 oz.](#)
- [Grape Sunwich, 2 oz.](#)
- [Vegan Burger, 2.25 oz. \(CN labeled\)](#)
- [Black Bean Burger, 3.3 oz.](#)
- [Black Bean Sliders](#)

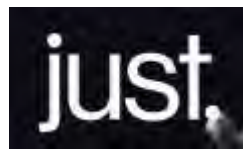


Eat Just

(844) 423-6637

Contact [website](#)

- [Just Mayo](#)
- [Just Dressing](#)
- [Just Cookies](#)



Earth Balance

A Division of Boulder Brands, Inc.

1600 Pearl St., Suite 300

Boulder, CO 80302

(866) 234-6429

Contact [website](#)

- [Original Buttery Spread, Dairy-Free](#)



[E S Foods](#)

(516) 682-5494

Contact [website](#)

Product Formulation Statements Available

- [Red Pepper Hummus Meal Kits](#) (may contain milk ingredients)
- [Sunbutter & Jelly Meal Kits](#) (may contain milk ingredients)



[Furmano Foods, Inc.](#)

770 Cannery Road

Northumberland, PA 17857

Phone (800) 952-1111

(877) 877-6032

Contact [website](#)

- [Bean Pouches](#)



[Gardein](#)

Pinnacle Food Service

(866) 816-7313

Contact [website](#)

Product Formulation Statements Available

- [Chick'N Breast](#)



[The Good Bean](#)

Berkley, California

sayhello@thegoodbean.com

Credited according to the Food Buying Guide

- [Roasted Chickpeas](#)
 - Sea Salt
 - Cracked Pepper
 - Smoky Chili & Lime
 - Mesquite BBQ
 - Thai Coconut
 - Chocolate
 - Sweet Cinnamon



[Hungry Planet](#)

Contact [website](#)

Product Formulation Statements Available

- [Range-Free Chicken](#)
- [Range-Free Beef Premium Ground](#)
- [Range-Free Burger](#)
- Beef Nuggets
- Italian Nuggets
- Italian Sausage, bulk



InHarvest

P.O. Box 428 Bemidji
Minnesota 56619-0428
800-346-7032

Contact [website](#)

- [Lentils & Heirloom Beans](#)
- [Whole Grains and Pasta](#)
- [Multigrain Blends](#)



JTM Food Group

200 Sales Ave.
Harrison, OH 45030
800-626-2308

Product Formulation Statements Available

- [Vegetarian Taco Filling](#)
- [Mediterranean Style Hummus \(CN labeled\)](#)
- [Red Pepper Hummus](#)
- [Vegetable Soup](#)
- [Steel Cut Oatmeal with Brown Sugar](#)
- [Bean & Cheese Burrito Filling \(CN labeled\)](#)



MCI Foods/Los Cabos Foods

M.C.I. Foods, INC.
13013 Molette St.
Santa Fe Springs, CA 90670
800-704-4661

Contact [web site](#)

Product Formulation Statement Available

- [Bean Burrito](#)



Maisen Vege-Protein

5801 S. Malt Avenue
Commerce, CA 90040
Contact [website](#)

323-728-4762

- [Vege-Protein Crumbles](#)
- [Vege-Protein Fillets](#)



[Morningstar Farms](#)

Kellogg's Food Away from Home

27199 State Highway 56

Brownsdale, MN 55918

877-511-5777

Contact [website](#)

Free marketing resources available

- [Gardenburger Classic Hamburger \(CN labeled\)](#)
- Beef-Style Crumbles (CN labeled)
- [Spicy Black Bean Burger \(CN labeled\)](#) (contains egg & milk)
- [Veggie Breakfast Sausage Patties \(CN labeled\)](#) (contains egg & milk)



[Nutritionist Deepa's Power Pack](#)

info@nutritionistdeepa.com

630-839-9296

- [Go Pro Lentil Flakes - Tikha flavor](#)



[ProHealth Pasta](#)

info@ProHealthPasta.com

850-296-2454

- [Red Lentil Pasta \(CN labeled\)](#)



[Revolution Foods](#)

Contact [website](#)

- [Superfood Lunch Bundle](#)
- [Sundipper Lunch Bundle](#)



[The J.M. Smucker Company](#)

1 Strawberry Lane

Orrville, Ohio 44667-0280

Contact [website](#)

Product Formulation Statement Available

- [Peanut Butter and Grape Jelly Sandwich On Wheat, 2.6 oz](#)
- [Peanut Butter and Strawberry Jam Sandwich on Wheat, 2.6 oz](#)
- [Peanut Butter and Grape Jelly with Soy Protein On Wheat, 2.3 oz](#)
- [Peanut Butter and Grape Jelly Sandwich on Wheat, 5.3 oz](#)
- [Peanut Butter and Strawberry Jam Sandwich on Wheat, 5.3 oz](#)
- [Peanut Butter and Grape Jelly with Soy Protein on Wheat, 4.5 oz](#)



[Sunbutter Sunflower Spread](#)

P.O. Box 3022
Fargo, ND 58108
Contact [website](#)

Product Formulation Statement Available

- [Individual Cups, 1.1 oz, 1.5 oz, 2.2 oz](#)
- [Bulk Creamy Sunbutter](#)
- [Sunwise Sunbutter & Grape Jelly Sandwiches](#)



[Superior Bean and Seed](#)

P.O. Box 215
Sudan, Texas 79371
806-227-2194
Contact [website](#)

- [Black Eyed Peas and Pinto Beans](#)



[The Tofurky Company](#)

P.O. Box 176
Hood River, OR 97031
Contact [website](#)
800-508-8100

Product Formulation Statement Available

- [Deli Slices](#)



[Truitt Family Foods](#)

Truitt Bros., Inc.
P.O. Box 309
Salem, OR 97308-0309
503-362-3674
Contact [web site](#)

Product Formulation Statements Available

Free marketing resources available [here](#)

- [Hummus: Regular and Chili Lime](#)
- [Beans: Pinto, Kidney, Garbanzo, Black and Navy](#)



[VeggieLand Food Service](#)

222 New Road
Parsippany, NJ 07054
973-808-1540
Email info@veggieland.com

Product Formulation Statements Available

- [Veggie Burgers](#)
- [Just-like Chicken](#)
- [Black Bean Chipotle Poppers](#)



NAPA VENDOR CODE	NAPA VENDOR NAME	MFG SKU	STOCK NO	UNIT OF ISSUE	NAPA DESCRIPTION	ALLOWANCE PACK SIZE
Entrée items						
Burgers						
0001	KRAFT	603040	893501E199511	BG	VEGETARIAN PATTIES P/C FZN HAMBURGER ALT 100% VEGAN 48/3.5 OZ EA	4/8 LB BAG PER CASE
0001	KRAFT	60034	894001E620968	CS	VEGETARIAN PATTIES P/C FZN HAMBURGER ALT 100% VEGAN 48/3.5 OZ EA	48/3.5 OZ EA PER CASE
0010	CONAGRA FOODS	4430010621	891501E096992	CN	VEGETARIAN PATTIES P/C FZN HAMBURGER ALT 100% VEGAN 48/3.5 OZ EA	6/#10 CNS PER CASE
0422	CUISINE INNOV/NEW WAVE CU	857600	894001E616181	CS	VEGETARIAN PATTIES P/C, FZN HAMBURGER ALTERNATIVES 40/3.75 OZ EA	40/3.75 OZ EA PER CASE
0422	CUISINE INNOV/NEW WAVE CU	857509	894001E616180	CS	VEGETARIAN PATTIES P/C, FZN HAMBURGER ALTERNATIVES 32/5 OZ EA	32/5 OZ EA PER CASE
Other entrees						
0422	CUISINE INNOV/NEW WAVE CU	50390-113	894001E617051	CS	VEGETARIAN MEAT BALLS P/C, FZN TFF 160/1 OZ EA	160/1 OZ EA PER CASE
0126	MRS. T'S PIEROGIES	41164-00865	894001E593330	BG	PIEROGIES, P/C, FZN, VEGAN POTATO & ONION, IQF, 6/48 CT BG, 288/1.4 OZ EA,	6 BGS PER CASE
0271	CUISINE SOLUTIONS	1005454	894001E625389	CO	VEGAN CHILI, F/C, FZN, 8/2 LB CO	8/2 LB CO
0370	CARLA'S PASTA	1226	894001E617652	CS	VEGETARIAN STUFFED SHELLS FZN VEGAN STYLE TOFU & VEGS 96/2 OZ EA	96/2 OZ EA PER CASE
0187	WINDSOR FOODS COMPANY				BIF-VEGAN WILD MUSHRM&KALE RAV -	2/3# Bags
0011	GENERAL MILLS BAKERIES FDSR	46000-88331	891501E098963	CN	BEANS, REFRIED, CN, VEGETARIAN, 120 OZ CN, 6/#10 CN	6/#10 SIZE CAN PER CASE
0532	CUSTOM BLENDING, INC.	085981 30818 5	894001E622865	PG	VEGETARIAN HAMBURGER MIX, SS, W/SOY PROTEIN, 5 LB YIELD/PG, 6/1.78 LB PG	6/1.78 LB PG
0532	CUSTOM BLENDING, INC.	30368	895001E620750	CO	VEGETARIAN HAMBURGER MIX W/SOY PROTEIN 6/1.78 LB CO	6/1.78 LB CO PER CASE
0532	CUSTOM BLENDING, INC.	30485	895001E620751	CO	VEGETARIAN SAUSAGE MIX W/SOY PROTEIN 6/1.78 LB CO	6/1.78 LB CO PER CASE

0586	ASIAN FOOD SOLUTIONS	22001WG	894001E625569	CO	ENT SIDE-M, NOODLES, YAKISOBA, FZN, WG, STIR-FRY NOODLES, 4/5.15 LB CO	4/5.15 LB CO
PB&J						
0034	SMUCKERS	5150006960	894001E623483	CS	SWICH PB & GRAPE JELLY FZN WHEAT W/O CRUST, 72/2.6 OZ PG	72/2.6 OZ PGS PER CASE
0034	SMUCKERS	5150006961	894001E623549	CS	SWICH PB & GRAPE JELLY FZN WHEAT W/O CRUST, 72/2.6 OZ PG	72/2.6 OZ PGS PER CASE
0034	SMUCKERS	5150006964	894001E623579	CS	SWICH PB & SBERRY JELLY FZN WHEAT W/O CRUST 72/2.6 OZ PG	72/2.3 OZ EA
0034	SMUCKERS	5150006964	894001E623579	CS	SWICH, PB & GRAPE JELLY, FZN, WHEAT, W/SOY PROTEIN, W/O CRUST, 72/2.3 OZ EA	72/2.3 OZ EA
Side dishes						
0011	GENERAL MILLS BAKERIES FDSR	11601	892001E095170	BX	STUFFING MIX, HERB	4/57.5 OZ BXS PER CASE
0187	WINDSOR FOODS COMPANY	56841	894001E621959	CS	APTZR ORIENTAL SPRING ROLLS FZN VEG 144/1 OZ EA	144/1 OZ EA PER CASE
Quinoa						
0464	INHARVEST	10296	892001E624737	CO	QUINOA RED, 12/2 LB CO	12/2 LB CO PER CASE
0464	INHARVEST	10303	892001E624680	CO	QUINOA WHITE 12/2 LB CO	12/2 LB CO PER CASE
0464	INHARVEST	16275	892001E625362	CO	QUINOA, WHITE, 6/2 LB CO	6/2 LB CO
Plant Based Milk						
0133	DEAN FOODS/MORINGSTAR FO	25293-00091-9	891001E615861	CS	MILK ALT SS SOY PLAIN 18/8.25 OZ CO	18/8.25 OZ CO PER CASE
0133	DEAN FOODS/MORINGSTAR FO	25293-60083-6	891001E613691	CS	MILK ALTERNATIVE SS SOY VAN 18/8.25 OZ CO	18/ 8.25 OZ CO PER CASE
0133	DEAN FOODS/MORINGSTAR FO	25293-60084-3	891001E613690	CS	MILK ALTERNATIVE SS SOY CHOC 18/8.25 OZ CO	18/ 8.25 OZ CO PER CASE
0133	DEAN FOODS/MORINGSTAR FO	25293-60090-4	891001E613692	CO	MILK ALTERNATIVE SS SOY ASEPTIC PAC 12/32 OZ CO	12/ 32 OZ CO PER CASE

0133	DEAN FOODS/MORINGSTAR FO	25293-60091-1	891001E613693	CO	MILK ALTERNATIVE SS SOY VAN ASEPTIC PAC 12/32 OZ CO	12/ 32 OZ CO PER CASE
0133	DEAN FOODS/MORINGSTAR FO	25293-60095-9	891001E615931	BX	MLK ALT CHL SOY PLAIN 1/5 GL BIB	1/5 GL BIB
0133	DEAN FOODS/MORINGSTAR FO	25293-601130	891001E615932	CO	MLK ALT SS SOY CHOC 12/32 OZ CO	12/32 OZ CO PER CASE
0133	DEAN FOODS/MORINGSTAR FO	25293-60115-4	891001E615933	CS	MILK ALT SS SOY VAN 18/8.25 OZ CO	18/8.25 OZ CO PER CASE
0297	KIKKOMAN INTERNATIONAL	06136	891001E613651	CO	MILK ALTERNATIVE SS SOY ORGANIC 12/32 OZ CO	12/ 32 OZ CO PER CASE
0297	KIKKOMAN INTERNATIONAL	06140	891001E613653	CO	MILK ATERNATIVE SS SOY VAN ORGANIC 12/32 OZ CO	12/32 OZ CO PER CASE
0297	KIKKOMAN INTERNATIONAL	06156	891001E613652	CO	MILK ALTERNATIVE SS SOY UNSWEETENED ORGANIC 12/32 OZ CO	12/ 32 OZ CO PER CASE
0297	KIKKOMAN INTERNATIONAL	06161	891001E616357	CO	MILK ALT SS SOY 18/8.25 OZ CO	18/8.25 OZ CO PER CASE
0297	KIKKOMAN INTERNATIONAL	06184	891001E624544	CO	MILK ALT SS SOY VAN ORGANIC 24/8 FL OZ ASEPTIC CO	24/8 FL OZ CO PER CASE
0297	KIKKOMAN INTERNATIONAL	06185	891001E624545	CO	MILK ALT SS SOY CHOC ORGANIC 24/8 FL OZ ASEPTIC CO	24/8 FL OZ CO PER CASE
0380	SUN OPTA/DAKOTA GOURMET	1066131	891001E620020	CO	MILK, ALT, SS, SOY VAN, 24/8 FL OZ CO	24/8 FL OZ CO
0380	SUN OPTA/DAKOTA GOURMET	33105	891001E622014	CO	MILK ALT, SS, SOY, PLAIN, ORGANIC, 1/5 GL CO	1/5 GL CO
0380	SUN OPTA/DAKOTA GOURMET	33108	891001E623731	CS	MILK ALT SS SOY PLAIN 24/8 FL OZ CO	24/8 FL OZ CO PER CASE
0380	SUN OPTA/DAKOTA GOURMET	33132	891001E623691	CO	MILK ALT, SS, SOY, VAN, ORGANIC, W/CALCIUM & VITAMINS, 12/32 FL OZ	12/32 FL OZ
0380	SUN OPTA/DAKOTA GOURMET	33205	891001E624018	BX	MILK ALT, SS, SOY, VAN, ORGANIC, W/CALCIUM & VITAMINS, 1/5 GL BIB	1/5 GL BIB
0380	SUN OPTA/DAKOTA GOURMET	33232	891001E623692	CO	MILK ALT, SS, SOY, PLAIN, ORGANIC, W/CALCIUM & VITAMINS, 12/32 FL OZ	12/32 FL OZ
0380	SUN OPTA/DAKOTA GOURMET	33305	891001E622846	BX	MILK ALT, SS, SOY, CHOCO, 1/5 GL BIB, FOR DISP	1/5 GL BIB
0380	SUN OPTA/DAKOTA GOURMET	33318	891001E609550	CO	MILK ALT, SS, SOY, CHOC, 24/8.25 FL OZ CO	24/8.25 FL OZ CO
0446	WHITE WAVE FOODS	101893	891001E624685	CS	MILK ALT ALMOND DARK CHOC SS 18/8 FL OZ CO	18/8 FL OZ CO PER CASE

0446	WHITE WAVE FOODS	101894	891001E624686	CS	MILK ALT ALMOND VAN SS 18/8 FL OZ CO	18/8 FL OZ CO PER CASE
0446	WHITE WAVE FOODS	101895	891001E624828	CO	MILK ALT, ALMOND, ORIGINAL, SS, 6/1 QT CO	6/1 QT CO
0446	WHITE WAVE FOODS	101965	891001E624113	CO	MILK ALT, SS, SOY, CHOC, 18/8 FL OZ CO	18/8 FL OZ CO
0446	WHITE WAVE FOODS	101966	891001E624112	CO	MILK ALT, SS, SOY, VERY VAN, 18/8 FL OZ CO	18/8 FL OZ CO
0446	WHITE WAVE FOODS	102320	891001E624212	BX	MILK ALT CHL SOY VAN 1/2.5 GL BIB	1/2.5 GL BIB PER CASE
0446	WHITE WAVE FOODS	102321	891001E624211	BX	MILK, ALT CHL SOY CHOC 1/2.5 GL BIB	1/2.5 GL BIB PER CASE
0446	WHITE WAVE FOODS	25293-00136-4	891001E624383	CO	MILK ALT, ALMOND VAN UNSWT SS, 6/64 FL OZ CO	6/64 FL OZ CO PER CASE
0446	WHITE WAVE FOODS	25293001227	891001E625294	EA	MILK ALT, CHL, COCONUT, ORIGINAL, 6/0.5 GL CO	6/0.5 GL CO
0459	MOO TECHNOLOGIES	20051/2PTCS	891001E622243	CS	MILK ALT, SS, SOY, CHOC, KOSHER, 24/8 FL OZ CO	24/8 FL OZ CO
0459	MOO TECHNOLOGIES	20051/2PTVS	891001E622242	CS	MILK ALT, SS, SOY, VAN, KOSHER, 24/8 FL OZ CO	24/8 FL OZ CO
Snack Bars						
0011	GENERAL MILLS BAKERIES FDSR	11580	892001E095176	PG	Cinnamon, Nature Valley RF Crunchy Granola Bar	144 / .7 Oz.
Snacks						
0560	Mondelez International	0019320000310	892001E614865	CS	CRACKERS, MULTI-GRAIN, WHEAT THINS, 72/0.77 OZ PG	72/0.77 OZ PG
0560	Mondelez International	1932000162	892001E622914	CO	CRACKERS WHEAT THIN, 12/9.1 OZ CO	12/9.1 OZ CO PER CASE
0560	Mondelez International	0019320001420	892001E622145	CS	CRACKERS, SALAD, RITZ, 20/3.8 OZ PG	20/3.8 OZ PG
0560	Mondelez International	0019320016580	892001E093675	CS	CRACKERS, SALAD, RITZ, 2 CT, 300/5 GM PG	300/5 GM PG
0560	Mondelez International	031111	892001E623890	BX	CRACKERS, SALAD, RITZ, 12/13.7 OZ BX	12/13.7 OZ BX PER CASE
0560	Mondelez International	916	892001E621820	CO	CRACKERS, SALAD, RITZ, 20/4 OZ CO	20/4 OZ CO
0560	Mondelez International	00365	892001E621349	CO	COOKIES GINGER SNAPS 6/16 OZ CO	6/16 OZ CO PER CASE
0560	Mondelez International	00935-0	892001E091601	CO	COOKIES, SWICH, OREO, 14 CT, 24/5 OZ CO	24/5 OZ CO
0560	Mondelez International	03745	892001E594271	PG	COOKIES SANDWICH NUTTER BUTTER 1.9 OZ PG 12 PGS/SLEEVE 4 SLEEVES/CS	48 PGS PER CASE
0560	Mondelez International	1932000192	892001E625261	CS	CRACKERS, SALTINES, PREMIUM, WHL GRAIN, TOPPED W/SEA SALT, 2 CT, 500/0.24 OZ PG	500/0.24 OZ PG

0560	Mondelez International	440000005700	892001E621871	CO	CRACKERS SALTINES PREMIUM 12/16 OZ CO	12/16 OZ CO PER CASE
Bread items						
0029	OTIS SPUNKMEYER	0-13087-21100-	892001E592614	PG	BAGELS, PLAIN, FZN, 3 OZ EA , IND WRP	48/3 OZ EA PER CASE
0029	OTIS SPUNKMEYER	0-13087-21120-	892001E592613	CO	BAGELS, PLAIN, FZN, 3 OZ EA , IND WRP	48/3 OZ EA PER CASE
0029	OTIS SPUNKMEYER	0-13087-26100-	892001E599069	CS	BAGELS, CINNAMON RAISIN, FZN	48/3 OZ EA PER CASE
0029	OTIS SPUNKMEYER	0-13087-26120-	892001E599070	CS	BAGELS, PLAIN, FZN, 3 OZ EA, BULK, 48/CS	48/3 OZ EA PER CASE
					BAGELS, CINNAMON RAISIN, FZN, 3 OZ EA, BULK, 48/CS	

NAPA VENDOR CODE	NAPA VENDOR NAME	MFG SKU	STOCK NO	UNIT OF ISSUE	NAPA DESCRIPTION	ALLOWANCE PACK SIZE
Salad Dressings						
0001	KRAFT	0018810	895001E591292	CO	DRESSING, CREAMY ITALIAN	200/12 GRM PGS PER CAS
0001	KRAFT	533200	895001E099893	CO	DRESSING, CREAMY ITALIAN	200/12 GRM PGS PER CAS
0001	KRAFT	0007290000	895001E619431	CO	DRESSING, CATALINA, FF 6/16 OZ. CO	6/16 OZ. CO
0001	KRAFT	0021000115100	895001E610326	CS	DRESSING CATALINA 1.5 OZ PG, 60/CASE	60/ 1.5 OZ PGS PER CASE
0001	KRAFT	21000 05280	895001E624502	CO	DRESSING, CATALINA, 6/32 FL OZ CO	6/32 FL OZ CO
0001	KRAFT	21000-03292	895001E621961	PG	DRESSING, CATALINA, 2/1 GL POURABLE FLEX PG	2/1 GL POURABLE FLEX PG
0001	KRAFT	64380	895001E596567	CO	DRESSING, CATALINA, 1 GAL CO	4/1 GAL CO PER CASE
0001	KRAFT	0019810	895001E590372	CS	DRESSING, ITALIAN	200/12 GRM PGS PER CAS
0001	KRAFT	0019984	895001E598327	CS	DRESSING, ITALIAN, 1.5 OZ PG, 100/CS	100/1.5 OZ PG PER CASE
0001	KRAFT	001B810	895001E094195	CO	SALAD DRESSING, FRENCH, FAT FREE	200/12 GRM PGS PER CAS
0001	KRAFT	001B984	895001E593413	CS	DRESSING, FRENCH, FAT FREE, 1.5 OZ PG	100/1.5 OZ PG PER CO
0001	KRAFT	64644	895001E598473	CO	DRESSING, FRENCH, FAT FREE, 1 GAL CO	4/1 GAL CO PER CASE
0001	KRAFT	001L984	895001E596194	CS	DRESSING, 1000 ISLAND FAT FREE, 1.5 OZ PG, 100/CO	100/1.5 OZ PG PER CASE
0001	KRAFT	64645	895001E598430	CO	DRESSING, THOUSAND ISLAND, FAT FREE, 1 GAL CO, 4/CS	4/1 GAL CO PER CASE
0001	KRAFT	0021000114800	895001E610795	CS	DRESSING VINAIGRETTE BALSAMIC 1.5 OZ PG 60/CASE	60/ 1.5 OZ PGS PER CASE
0001	KRAFT	0021000647420	895001E608688	CO	DRESSING RASPBERRY VINIAGRETTE FAT FREE 1 GAL CO 4/CS	4/ 1 GAL CO PER CS
0001	KRAFT	21000 05279	895001E624501	CO	DRESSING, VIN, RBERRY, FF, 6/32 FL OZ CO	6/32 FL OZ CO
0001	KRAFT	21000-02875	895001E620039	CO	DRESSING, VIN, LIME CILANTRO, W/GARLIC, 2/1 GL CO	2/1 GL CO
0001	KRAFT	21000-03312	895001E621967	PG	DRESSING, VIN, BALSAMIC, 2/1 GL FLEX PG	2/1 GL FLEX PG
0001	KRAFT	0021000114800	895001E610795	CS	DRESSING VINAIGRETTE BALSAMIC 1.5 OZ PG 60/CASE	60/ 1.5 OZ PGS PER CASE
0001	KRAFT	21000 03685	895001E623147	PG	DRESSING, VIN BALSAMIC, 4/1 GL POURABLE PG	4/1 GL PG
0001	KRAFT	534340	895001E618626	CS	DRESSING ITALIAN GOLDEN 60/1.5 OZ PG	60/1.5 OZ PGS PER CASE

0001	KRAFT	64303	895001E596566	CO	DRESSING, ITALIAN, GOLDEN, 1 GAL CO	4/1 GAL CO PER CASE
0001	KRAFT	64304	895001E605306	CO	DRESSING CREAMY ITALIAN 1 GAL CO 4/CASE	4/1 GAL CO PER CASE
0001	KRAFT	64104	895001E600200	CO	DRESSING, ITALIAN, FAT FREE ZESTY, 16 OZ CO, 6/CASE	6/16 OZ CO PER CASE
0122	KEN'S FOODS INC.	KE0020B3	895001E621305	CS	DRESSING CRMY ITALIAN 60/1.5 OZ POUCH CO	60/1.5 OZ POUCH CO PER CASE
0122	KEN'S FOODS INC.	KE0460	895001E622736	CO	DESSING SWT VADALIA ONION 4/1 GL CO	4/1 GL CO PER CASE
0122	KEN'S FOODS INC.	KE0486	895001E621753	CO	DRESSING VIN BALSAMIC FF 4/1 GL CO	4/1 GL CO PER CASE
0122	KEN'S FOODS INC.	KE0620A5	895001E593217	CO	DRESSING, ITALIAN, CREAMY STYLE, 1.5 OZ PG	100/1.5 OZ PG PER CS
0122	KEN'S FOODS INC.	KE0636	895001E624584	CO	DRESSING VIN OLIVE OIL LITE W/BALSAMIC, 4/1 GL CO	4/1 GL CO PER CASE
0122	KEN'S FOODS INC.	KE0636B3	895001E593208	CO	DRESSING, VIN, OLIVE OIL, LITE, W/BALSAMIC, 60/1.5 OZ PG	60/1.5 OZ PG PER CS
0122	KEN'S FOODS INC.	KE0636ZY	895001E617596	CO	DRESSING VIN OLIVE OIL LITE 6/32 OZ CO	6/32 OZ CO PER CSE
0122	KEN'S FOODS INC.	KE0710ZY	895001E617597	CO	DRESSING VIN RED WINE LITE 6/32 OZ CO	6/32 OZ CO PER CASE
0122	KEN'S FOODS INC.	KE0807	895001E595228	CO	DRESSING, ITALIAN, FAT FREE, 1 GAL CO	4/1 GAL CO PER CASE
0122	KEN'S FOODS INC.	KE0807B3	895001E593204	CS	DRESSING ITALIAN, FAT FREE, 1.5 OZ PG	60/1.5 OZ PG PER CS
0122	KEN'S FOODS INC.	KE0801B3	895001E593194	CS	DRESSING, ITALIAN, LITE, 1.5 OZ PG	60/1.5 OZ PG PER CS
0122	KEN'S FOODS INC.	KE0809	895001E621306	CO	DRESSING FRENCH CALIF STYLE FF 4/1 GL CO	4/1 GL CO PER CASE
0122	KEN'S FOODS INC.	KE0809B3	895001E593205	CS	DRESSING, FRENCH FAT FREE, 1.5 OZ PG	60/1.5 OZ PG PER CS
0122	KEN'S FOODS INC.	KE0812	895001E606938	CO	DRESSING, FRENCH, DELUXE, 1 GAL CO 4/CS	4/1 GAL CO PER CASE
0122	KEN'S FOODS INC.	KE0858	895001E606936	CO	DRESSING, ITALIAN, GOLDEN, 1 GAL CO 4/CS	4/1 GAL CO PER CASE
0122	KEN'S FOODS INC.	KE0858B3	895001E593200	CS	DRESSING, ITALIAN, GOLDEN STYLE, 1.5 OZ PG	60/1.5 OZ PG PER CS
0122	KEN'S FOODS INC.	KE0858ZY	895001E617571	CO	DRESSING ITALIAN GOLDEN 6/32 OZ CO	6/32 OZ CO PER CASE
0122	KEN'S FOODS INC.	KE1008B3	895001E621045	CS	DRESSING, CRMY FRENCH, 60/1.5 OZ POUCH CO	60/1.5 OZ POUCH CO
0122	KEN'S FOODS INC.	KE1057B3	895001E613282	CS	DRESSING VINAIGRETTE BASAMIC 1.5 OZ POUCH CO 60/CASE	60/ 1.5 OZ CO PER CASE
0122	KEN'S FOODS INC.	KE1116	895001E625236	CO	DRESSING, ITALIAN, GOLDEN CALIF, 4/1 GL CO	4/1 GL CO
Ingredients						
0356	GRECIAN DELIGHT FOOD	4331	895001E617984	CO	SALAD HUMMUS FZN MEDITERRANEAN OLIVE 2/0.5 GL CO	2/0.5 GL CO PER CASE

0356	GRECIAN DELIGHT FOOD	4340	894001E607889	CO	SALAD HUMMUS,TRADITIONAL, FZN, T 1/2 GAL CO, 4/CASE	4/ 1/2 GAL CO PER CASE
0356	GRECIAN DELIGHT FOOD	4350	895001E617985	CO	SALAD HUMMUS FZN RST GARLIC 2/0.5 GL CO	2/0.5 GL CO PER CASE
0532	CUSTOM BLENDING, INC.	30722	894001E621156	CO	SALAD, HUMMUS MIX, SS, ORIG, WATER&OIL PREP, 6/222 GM CO	6/222 GM CO
0532	CUSTOM BLENDING, INC.	30725	894001E621157	CO	SALAD, HUMMUS MIX, SS, ORIG, WATER&OIL PREP, 6/444 GM CO	6/444 GM CO
0006	SCHWAN SALES	72180-73036	892001E099176	EA	PIZZA DOUGH, FZN, FORMED	20 PER CASE
0008	CAMPBELLS	07392	892001E594895	BG	STUFFING MIX, HERB, 32 OZ BG	6/32 OZ BG PER CASE
0001	KRAFT	562800	895001E600595	PG	SAUCE, MARINARA, 2 OZ CUP, 60/CS	6/#10 SIZE PG PER CASE
0001	KRAFT	60034	894001E620968	CS	SAUCE, PIZZA, #10 SIZE FLEXIBLE POUCH PG	48/3.5 OZ EA PER CASE
Breakfast items						
0002	KELLOGG SALES	38000-00122	892001E092077	BX	CEREAL, CORN FLAKES	12/18 OZ BXS PER CASE
0002	KELLOGG SALES	38000-00191	892001E093679	BG	CEREAL, CORN FLAKES	4/26 oz
0002	KELLOGG SALES	38000-00196	892001E092076	CS	Cereal, Corn Flakes 26 oz	96 Ct.
0002	KELLOGG SALES	38000-00500	892001E596097	PG	CEREAL, CORN FLAKES, 96 IND BOWLS/CO	80/1 CT PG PER CASE
0002	KELLOGG SALES	38000-30004	892001E592156	PG	TOASTER PASTRY, STRAWBERRY, UNFROSTED, 80/1 CT PER CASE	48/2 CT PGS PER CASE
0002	KELLOGG SALES	38000-30404	892001E592170	PG	TOASTER PASTRY, BLUEBERRY, UNFROSTED, 2 CT PGS, 48 PER CASE	48/2 CT PGS PER CASE
0002	KELLOGG SALES	38000-00591	892001E094242	BG	TOASTER PASTRY, STRAWBERRY, UNFROSTED, 48/2 CT PGS PER CASE	4/27 OZ BG PER CASE
0002	KELLOGG SALES	38000-00596	892001E095784	CS	CEREAL RICE KRISPIES, 4/27 OZ BG	96 Ct.
0002	KELLOGG SALES	38000-08636	892001E598918	CS	CEREAL, RICE KRISPIES, 96 IND BOWLS/CO	60/1.3 OZ CUP PER CASE
0002	KELLOGG SALES	38000-00891	892001E093148	BG	CEREAL, RICE KRISPIES, 1.3 OZ CUP, 60/CS	4/56 OZ BGS PER CASE
0002	KELLOGG SALES	38000-00896	892001E093032	CS	CEREAL, BRAN FLAKES, W/RAISINS, 56 OZ BAG	96/1.25 OZ BOWL PER CA
0002	KELLOGG SALES	38000-01091	892001E094280	BG	CEREAL BRAN FLAKES W/RAISINS 96/1.25 OZ BOWL	4/35 OZ BGS PER CASE
0002	KELLOGG SALES	38000-01096	892001E092825	CS	CEREAL, CORN POPS, 35 OZ BAG	96/0.75 OZ BOWL PER CA
0002	KELLOGG SALES	38000-06356	892001E598915	CS	CEREAL CORN POPS 96/0.75 OZ BOWL PG	60/1.5 OZ CUP PER CASE
0002	KELLOGG SALES	38000-01191	892001E097728	BG	CEREAL, CORN POPS, 1.5 OZ CUP, 60/CS	4/37.5 Oz. BG PER CS
0002	KELLOGG SALES	38000-01196	892001E092078	CS	CEREAL, COCOA KRISPIES, 37.5 OZ BAG	96/1.125 OZ BOWL PER C
0002	KELLOGG SALES	38000-19456	892001E605281	BX	CEREAL COCOA KRISPIES 96/1.125 OZ BOWL PG	60/2.3 OZ CUP PER CASE

0002	KELLOGG SALES	38000-01591	892001E094244	BG	CEREAL COCOA RICE KRISPIES 60/2.3 OZ CUP CO	4/40 OZ BAG
0002	KELLOGG SALES	38000-01596	892001E092826	CS	CEREAL, CORN FROSTED FLAKES, 40 OZ BAG	96 Ct.
0002	KELLOGG SALES	38000-06357	892001E598917	CS	CEREAL, CORN FROSTED FLAKES, 96 IND BOWLS/CO	60/2.1 OZ CUP PER CASE
0002	KELLOGG SALES	38000-01791	892001E092101	BG	CEREAL, FROSTED FLAKES, 2.1 OZ CUP, 60/CS	4/31 OZ BAG
0002	KELLOGG SALES	38000-01796	892001E092827	CO	CEREAL, FROOT LOOPS, 31 OZ BAG	96 Ct.
0002	KELLOGG SALES	38000-06353	892001E598916	CS	CEREAL, FROOT LOOPS, 96 IND BOWLS/CO	60/1.5 OZ CUP PER CASE
0002	KELLOGG SALES	38000-02991	892001E092100	BG	CEREAL, FROOT LOOPS, 1.5 OZ CUP, 60/CS	4/31 OZ BGS PER CASE
0002	KELLOGG SALES	38000-02996	892001E094736	CS	CEREAL, APPLE JACKS, 31 OZ BAG	96 IND BOWLS PER CASE
0002	KELLOGG SALES	38000-08635	892001E598914	CS	CEREAL, APPLE JACKS, 96 IND BOWLS	60/1.5 OZ CUP PER CASE
0002	KELLOGG SALES	38000-03591	892001E094399	BG	CEREAL, APPLE JACKS, 1.5 OZ CUP, 60/CS	4/30 OZ BAG PER CASE
0002	KELLOGG SALES	38000-03596	892001E095788	CO	CEREAL CRISPIX, 30 OZ BAG	96 IND BOWLS/CO PER CS
0002	KELLOGG SALES	38000-13791	892001E098196	BG	CEREAL CRISPIX 96 IN BOWLS/CO	4 - 50 Oz. Bg
0002	KELLOGG SALES	38000-21982	892001E095779	CS	Kellogg Low Fat Granola WITH RAISINS, Bulk,4/50 oz bg	70 BXS PER CASE
0011	GENERAL MILLS BAKERIE	11604	892001E590984	CO	CEREAL, SHREDDED WHEAT MINIATURES, 70 IND BOXES/CO	96 IND BOWLS PER CASE
0011	GENERAL MILLS BAKERIE	11653	892001E596775	CS	CEREAL, FRENCH TOAST CRUNCH	70 IND PGS PER CASE
0011	GENERAL MILLS BAKERIE	17733	892001E617190	CS	CEREAL, CINNAMON TOAST CRUNCH, 70 IND PGS/CS	96/1 OZ CO PER CASE
0011	GENERAL MILLS BAKERIE	11659	892001E095221	CO	CEREAL CIN TOAST CRUNCH 96/1 OZ POUCHPAK CO	70 IND PGS PER CASE
0011	GENERAL MILLS BAKERIE	11956	892001E095220	CO	CEREAL, TOTAL, BRAN FLAKES, W/RAISINS	70- 7/8 Oz.
0011	GENERAL MILLS BAKERIE	11660	892001E090245	CO	Singlepak Total	70- 7 / 8 Oz.
0011	GENERAL MILLS BAKERIE	11663	892001E095219	BG	CEREAL, Apple Cinnamon Cheerios, 70 IND PGS/CO	4/56 OZ
0011	GENERAL MILLS BAKERIE	11669	892001E092822	CO	CEREAL, BRAN FLAKES, W/RAISINS, 56 OZ BG	96 PER CS
0011	GENERAL MILLS BAKERIE	11941	892001E091214	CO	APPLE CINNAMON CHEERIOS	96/11/16 OZ PER CS
0011	GENERAL MILLS BAKERIE	11942	892001E093030	CO	CHEERIOS, 11/16 OZ	96/5/8 OZ PER CASE
0011	GENERAL MILLS BAKERIE	11945	892001E095218	CS	CEREAL, KIX, 96/0.62 OZ EA	70 IND CO PGS PER CASE
0011	GENERAL MILLS BAKERIE	11959	892001E095208	BG	CEREAL, CHEERIOS	4 / 32 Oz.
0011	GENERAL MILLS BAKERIE	11963	892001E094852	BG	Bulkpak Rice Crunchins	4 / 32 Oz.
0011	GENERAL MILLS BAKERIE	11965	892001E095210	BG	Bulkpak Trix	4/25 OZ BG

0011	GENERAL MILLS BAKERIE	11968	892001E097622	CO	CEREAL, KIX, 4/25 OZ BG	11/16 OZ, 96 PER CASE
0011	GENERAL MILLS BAKERIE	11974	892001E097623	CO	CEREAL, CORN FLAKES	96/0.9 OZ PG
0011	GENERAL MILLS BAKERIE	11976	892001E093317	BG	CEREAL, COCOA PUFFS, 96/0.9 OZ PG	4 / 32 Oz.
0011	GENERAL MILLS BAKERIE	11977	892001E094240	BG	Bulkpak Country Corn Flakes	4 / 29 Oz.
0011	GENERAL MILLS BAKERIE	11980	892001E095206	CO	Bulkpak Cheerios	70 IND PGS PER CASE
0011	GENERAL MILLS BAKERIE	11982	892001E092551	BG	CEREAL, WHEATIES	4/43.5 OZ BGS PER CASE
0011	GENERAL MILLS BAKERIE	11983	892001E095217	CO	CEREAL, WHEATIES	70- 11 /16 Oz
0011	GENERAL MILLS BAKERIE	11987	892001E095209	BG	CEREAL, CORN FLAKES, 70 IND SZ PKG PER CS	4 / 50 Oz.
0011	GENERAL MILLS BAKERIE	11998	892001E092102	BG	Bulpak Low Fat Fruit Granola	4 / 35 Oz.
0011	GENERAL MILLS BAKERIE	11999	892001E095213	BG	Bulpak Lucky Charms	4 / 35 Oz.
0011	GENERAL MILLS BAKERIE	26348	892001E617189	CS	Bulkpak Cocoa Puffs	96/0.88 OZ CO PER CASE
0011	GENERAL MILLS BAKERIE	12392	892001E602574	CS	CEREAL COCOA PUFFS 25% LESS SUGAR 96/0.88 OZ POUCHPAK CO	96 IND BOWLS PER CS
0011	GENERAL MILLS BAKERIE	12773	892001E604031	BX	CEREAL,TOTAL BRAN FLAKES, W/RAISINS, 96 IND BOWLS/CS	4/ 32 OZ BOX PER CS
0011	GENERAL MILLS BAKERIE	13254	892001E601168	CS	CEREAL,CHEERIOS,STRAWBERRY BERRY BURST,32 OZ BOX, 4/CS	96 IN BOWLS PER CASE
0011	GENERAL MILLS BAKERIE	13255	892001E602052	CO	CEREAL, REESE'S PUFFS, 96 IND BOWLS/CS	4/ 35 OZ CO PER CS
0011	GENERAL MILLS BAKERIE	17203	892001E617610	CO	CEREAL, REESE'S PUFFS, 35 OZ CO, 4/CS	4/35 OZ CO PER CASE
0011	GENERAL MILLS BAKERIE	17461	892001E098632	BX	CEREAL CHEERIOS FRUITY 4/35 OZ CO	12/16 OZ BX PER CS
0011	GENERAL MILLS BAKERIE	19464	892001E093771	BX	CEREAL, CHEX WHEAT, 16 OZ BOX	12/15 OZ BXS PER CASE
0011	GENERAL MILLS BAKERIE	19469	892001E590101	BX	CEREAL, CHEX, RICE, 15 OZ BOX 12/CS	12/18 OZ BXS PER CASE
0011	GENERAL MILLS BAKERIE	19472	892001E098631	BX	CEREAL, WHEATIES 18 OZ BX 12/CS	12/13 OZ BX PER CASE
0011	GENERAL MILLS BAKERIE	27528	892001E617729	CO	CEREAL KIX 13 OZ BOX 12/CS	10/18 OZ CO PER CASE
0011	GENERAL MILLS BAKERIE	27558	892001E590001	BX	CEREAL CHEERIOS 10/18 OZ CO	14/14 OZ BXS PER CASE
0011	GENERAL MILLS BAKERIE	27559	892001E614837	CO	CEREAL, CHEX CORN, 14/14 OZ BOX	14/12.8 OZ CO PER CASE
0011	GENERAL MILLS BAKERIE	27564	892001E098634	BX	CEREAL CHEX RICE 14/12.8 OZ CO	12/14 OZ PER CS
0011	GENERAL MILLS BAKERIE	27567	892001E618963	CO	CEREAL CHEERIOS 12/14 OZ BOX	14/12 OZ CO PER CASE
0011	GENERAL MILLS BAKERIE	28931	892001E606840	CS	CEREAL KIX 14/12 OZ CO	60/1.3 OZ CUP CO PER CA
0011	GENERAL MILLS BAKERIE	28932	892001E606841	CS	CEREAL CHERROIS 1.3 OZ CUP CO 60/CS	60/2 OZ CUP CO PER CASE
0011	GENERAL MILLS BAKERIE	31888	892001E623546	CS	CEREAL, CINNAMON TOAST CRUNCH, 2 OZ CUP CO 60/CS	96/ 1 OZ BOWL CO PER C/
0011	GENERAL MILLS BAKERIE	31917	892001E092832	CO	CEREAL COCOA PUFFS 25% LESS SUGAR, 96/1 OZ BOWL CO	96/ 1 OZ BOWL PG PER C.

0011	GENERAL MILLS BAKERIE	31921	892001E624229	CS	CEREAL LUCKY CHARMS 96/ 1 OZ BOWL PG	96/1 OZ CO PER CASE
0011	GENERAL MILLS BAKERIE	31923	892001E623468	CS	CEREAL CHEX RICE 96/1 OZ BOWL CO	96/1 OZ BOWL PGS PER C
0011	GENERAL MILLS BAKERIE	47595	892001E625581	CS	CEREAL TRIX 96/1 OZ BOWL PG	96/0.68 OZ BOWL CO
0070	PEPSICO FOODSERVICE &	43140	892001E092104	CS	CEREAL, CHEX, RICE, GF, 96/0.68 OZ BOWL CO	4/34 OZ BGS PER CASE
0070	PEPSICO FOODSERVICE &	43141	892001E094241	BX	CEREAL, CAPT'N CRUNCH	4/2 LB 8 OZ BGS PER CASE
0070	PEPSICO FOODSERVICE &	43146	892001E095440	BX	CEREAL, LIFE	4/24 OZ BGS PER CASE
0070	PEPSICO FOODSERVICE &	43147	892001E590784	BG	CEREAL, CORN FLAKES	4/1 LB 10 OZ BGS PER CAS
0070	PEPSICO FOODSERVICE &	43148	892001E590783	BG	CEREAL, CRISPY RICE	4/3 LB 6 OZ BGS PER CASE
0070	PEPSICO FOODSERVICE &	43152	892001E098317	BG	CEREAL, BRAN FLAKES, W/RAISINS	4/34 OZ BGS PER CASE
0070	PEPSICO FOODSERVICE &	43187	892001E594687	BG	CEREAL, CAPT'N CRUNCH BERRIES	4/40 OZ BG PER CASE
0070	PEPSICO FOODSERVICE &	43337	892001E093042	CO	CEREAL LIFE, CINNAMON, 40 OZ BG	70/15/16 OZ BXS PER CAS
0070	PEPSICO FOODSERVICE &	43338	892001E595057	CO	CEREAL, CAPT'N CRUNCH	70 IND BOXES PER CASE
0070	PEPSICO FOODSERVICE &	43338	892001E595057	CO	CEREAL, LIFE, 70 IND BOX/CO	70 IND BOXES PER CASE

NAPA VENDOR CODE	NAPA VENDOR NAME	MFG SKU	STOCK NO	UNIT OF ISSUE	NAPA DESCRIPTION	ALLOWANCE PACK SIZE
					These items appear at least vegetarian if not vegan but have not been confirmed	
0422	CUISINE INNOV/NEW WAVE CUISINE	50317-123	894001E619927	CS	VEGETARIAN PATTIES, P/C, FZN, HAMBURGER ALTERNATIVE, 48/2.5 OZ EA	48/2/5 OZ EA
0422	CUISINE INNOV/NEW WAVE CUISINE	50318-123	894001E619926	CS	VEGETARIAN PATTIES, P/C, FZN, HAMBURGER ALTERNATIVE, 36/4 OZ EA	36/4 OZ EA
0422	CUISINE INNOV/NEW WAVE CUISINE	50320-123	894001E621990	LB	VEGETARIAN BURGER, P/C, FZN, ASIAN FLAVOR, 36/4 OZ EA	36/4 OZ EA
0422	CUISINE INNOV/NEW WAVE CUISINE	50326-123	894001E621991	LB	VEGETARIAN BURGER, P/C, FZN, SPICY SOUTHWEST FLAVOR, 36/4 OZ EA	36/4 OZ EA
0422	CUISINE INNOV/NEW WAVE CUISINE	64006-951	894001E621988	LB	VEGETARIAN BURGER, P/C, FZN, 36/4.25 OZ EA	36/4.25 OZ EA
0422	CUISINE INNOV/NEW WAVE CUISINE	64007-951	894001E621992	LB	VEGETARIAN BURGER, P/C, FZN, 54/1.8 OZ EA	54/1.8 OZ EA
0001	KRAFT	60011	894001E617033	CS	VEGETARIAN PATTIES P/C FZN CKN ALT 12/10 OZ CO	12/10 OZ CO PER CA
0001	KRAFT	60036	894001E606492	CS	VEGETARIAN PATIES, PRECKD, FZN, HAMBURGER ALTERNATIVE, 5 OZ EA, 48/CS	48/ 5 OZ EA PER CS
0001	KRAFT	60038	894001E621390	CS	VEGETARIAN PATTIES FZN HAMBURGER ALT 48/5 OZ EA	48/5 OZ EA PER CAS
0002	KELLOGG SALES	28989-09668	894001E624938	CO	VEGETARIAN CRUMBLES, P/C, FZN, SAUSAGE ALT, FOR PIZZA, IT FLAV, 2/10 LB CO	2/10 LB CO
0002	KELLOGG SALES	28989-07191	894001E598003	CS	VEGETARIAN PATTIES, PRECKD, FZN, HAMBURGER STYLE, 3.4 OZ EA, 48/CS	48/3.4 OZ EA PER CA
0002	KELLOGG SALES	28989-26720	894001E619717	PG	VEGETARIAN FRANKS FZN 9 CT PG 12/12.75 OZ PG	12/12.75 OZ PGS PE

0002	KELLOGG SALES	28989-31651	894001E616992	CS	VEGETARIAN PATTIES P/C FZN CHIPOTLE BLK BEANS 48/4.25 OZ EA	48/4.25 OZ EA PER C
0002	KELLOGG SALES	28989-49938	894001E624809	CS	VEGETARIAN PATTIES, P/C, FZN, W/TVP, HAMBURGER ALT, BLACK BEAN, SPICY, 48/2.9 OZ	48/2.9 OZ EA
0002	KELLOGG SALES	28989-57796	894001E624543	LB	VEGETARIAN FRANKS P/C, FZN W/CORN & SOY PROTEINS, 8/6 CT PG, 48/1.4 OZ EA	48/1.4 OZ EA PER C/
0002	KELLOGG SALES	28989-75518	894001E622759	CO	VEGETARIAN CRUMBLES P/C, FZN, HAMBURGER CRUMBLES ALT, 8/12 OZ CO	8/12 OZ CO PER CAS
0002	KELLOGG SALES	28989-97120	894001E590857	BX	VEGETARIAN BFST LINKS, P/C, FZN, W/TVP, SAUS ALTERNATIVE, 168/0.81 OZ EA	168/0.81 OZ EA PER
0002	KELLOGG SALES	28989-97152	894001E625210	CS	VEGETARIAN BKFST SAUSAGE BREAKFAST PATTIES, P/C, FZN, 1.34 OZ EA, 112 PATTIES/CS	112/1.34 OZ PATTIE
0002	KELLOGG SALES	28989-97540	894001E614457	CO	VEGETARIAN PATTIES P/C FZN CHICKEN ALTERNATIVE 2.5 OZ EA 8/10 OZ CO	8/10 OZ CO PER CAS
0002	KELLOGG SALES	28989-97542	894001E620895	CS	VEGETARIAN NUGGETS P/C FZN CKN NUGGET ALT 112/0.75 OZ EA	112/0.75 OZ EA PER
0002	KELLOGG SALES	28989-97712	894001E590794	CS	VEGETARIAN PATTIES, P/C, UNBRD, FZN, HAMBURGER ALT 4/12 CT PG 48/3.5 OZ EA	4/12 CT PG 48/3.5 C
0002	KELLOGG SALES	28989-97762	894001E590878	BG	VEGETARIAN NUGGETS, PRECKD, FZN, W/TVP, CKN NUGGET ALT, 212/0.75 OZ EA, 10 LB BG	212/0.75 OZ EA PER
0002	KELLOGG SALES	28989-97765	894001E190152	LB	VEG PATTIES P/C FZN SPICY W/BLK BEAN HMBGR ALT 48/3.25 OZ	48/3.25 OZ EA PER C
0002	KELLOGG SALES	28989-97790	894001E590880	BX	VEGETARIAN PATTIES, PRECKD, FZN, 3 OZ EA	48/3 OZ EA PER CAS
0002	KELLOGG SALES	84059-00072	894001E623372	CS	VEGETARIAN PATTIES, P/C, FZN, HAMBURGER ALT, W/BLACK BNS, 4/12 CT PG, 48/3.4 OZ	4/12 CT PGS PER CA
0002	KELLOGG SALES	84059-07103	894001E604947	CS	VEGETARIAN RIBLET PRECKD FZN W/SOY PROTEIN 3 OZ EA 53/CASE	53/3 OZ EA PER CAS
0002	KELLOGG SALES	8405971122	894001E620712	CS	VEGETARIAN PATTIES P/C FZN HAMBURGER ALTERNATIVES 48/3.2 OZ EA	48/3.2 OZ EA PER C/
0087	CUSTOM CULINARY INC.	30737	894001E621278	CS	VEGETARIAN PATTIES, RAW, FZN, BLK BEAN, 36/3.4 OZ EA	36/3.4 OZ EA
0271	CUISINE SOLUTIONS	1003718	894001E605510	CO	VEGETARIAN LENTIL CHILI LENTILS & VEGETABLES W/CHILI SPICES 2 LB CO 8/CS	8/2 LB CO PER CASE

0008	CAMPBELLS	15911	894001E607751	CO	VEGETARIAN ENTREE,MULTI-SERV,FZN,TAMALE PIE,W/SOY CRUMBLES & VAGEN CORNBRD CRUST	4/ 5 LB CO PER CASE
0015	NESTLE	13800-2258700	894001E607463	CO	ENTREE,MULTI-SERV,FZN,CHILI,VEGETARIAN,80 OZ PLASTIC POUCH CO,4/CASE	4/ 80 OZ CO PER CA
0015	NESTLE	13800-63060600	894001E619223	CO	VEGETARIAN ENT MULT SERV FZN EGGPLANT MEATBALLS W/TOMATO SC WHEAT PASTA & VEGS	4/92 OZ CO PER CAS
0273	C & R FOODS INC.	E000613	894001E625247	PG	VEGETARIAN CRUMBLES, RAW, FZN, CHORIZO ALT, W/SOY, 4/2.5 LB PG	4/2.5 LB PG
	Appears Vegetarian					
	Pasta					
	Lasagna					
0015	NESTLE	13800-36611-00	894001E590413	CO	ENTREE, MULTI-SEV, LITE, FZN, LASAGNA W/GRILLED VEG, 90 OZ OZ	4/90 OZ CO PER CAS
0015	NESTLE	13800-4041500	894001E597082	CO	ENTREE, MULTI-SERV, FZN, PASTA BAKE, W/WHITE CHEDDAR & SWISS, 72 OZ CO	4/72 OZ CO PER CAS
0008	CAMPBELLS	08063	894001E091067	CO	Garden Vegetable Lasagna, Campbell's Italian Kitchen 5 # Entrees	4/5.75 LB PER CASE
0184	MICHAEL ANGELO'S	0-000163	894001E622543	CS	ENT-I, LASAGNA, W/VEG, FZN, 8/11 OZ CO	8/11 OZ CO PER CAS
	Other pasta					
0010	CONAGRA FOODS	11429	892001E594107	CO	MANICOTTI, CHEESE, FZN, W/O SAUCE, 4 IN LG, 60/2.75 OZ EA	60/2.75 OZ EA PER
0370	CARLA'S PASTA	5785	892001E617392	CO	RAVIOLI CHEESE P/C FZN W/O SC WHL WHT W/RICCOTA&ROMANO CH MXD GRD VEG&RAISINS	2/2.5 LB CO PER CA
0010	CONAGRA FOODS	11430	892001E596794	BX	PASTA, STUFFED SHELLS, CHEESE, P/, FZN, LARGE, 2 OZ EA 24/BX, 4/BX PER CASE	4/24/BX PER CASE
0010	CONAGRA FOODS	20400	892001E594100	BG	TORTELLINI, CHEESE, P/C, FZN, TRI COLOR W/O SAUCE 5 LB BG	2/5 LB BGS PER CAS
0010	CONAGRA FOODS	20401	892001E594101	BG	TORTELLINI, CHEESE, P/C, FZN, W/O SAUCE, 5 LB BG	2/5 LB BGS PER CAS
0015	NESTLE	13800-3010900	894001E596341	CO	ENTREE, MULTI-SERV, FZN, TORTELLINI BAKE, W/CHEESE & HERBS, 95 OZ CO	4/95 OZ CO PER CAS
0010	CONAGRA FOODS	81170	892001E593150	CN	RAVIOLI, CHEESE, CN, W/TOMATO SAUCE, 108 OZ CN, 6/#10 CN	6/#10 CAN PER CAS
0085	ROSINA FOODS	48-48025-100	892001E612386	CO	TORTELLINI TRI COLOR FZN 0.16 OZ EA 5 LB CO 2/CASE	2/ 5 LB CO PER CAS

0085	ROSINA FOODS	48-48027-100	892001E612385	CO	TORTELLINI CHEESE FZN 0.16 OZ EA 5 LB CO 2/CS	2/ 5 LB CO PER CAS
0085	ROSINA FOODS	48-48100-100	892001E612378	CS	MANICOTTI CHEESE FZN W/O SAUCE 2-3/4 OZ EA 72/CASE	72/ 2-3/4 OZ EA PER
0114	DEL MONTE	39350	894001E616887	CO	ENT-I RAVIOLI CHEESE & SPINACH SS W/TOMATO SAUCE 6/10 OZ CO FOR MICROWAVE	6/10 OZ CO PER CAS
0184	MICHAEL ANGELO'S	0-000164	894001E622544	CS	ENT-I, MANICOTTI CHEESE FILLED W/SAUCE FZN 8/11 OZ CO	8/11 OZ CO PER CAS
0126	MRS. T'S PIEROGIES	41164-00378	894001E624024	CS	RAVIOLI, 4 CHEESE, FZN, WG, W/O SAUCE, 288/1.44 OZ EA, 4/6.48 LB BG	4/6.48 LB BG
0187	WINDSOR FOODS COMPANY	74609	892001E614131	CO	PASTA TORTELLINI SPINACH & CHEESE P/C FZN 0.16 OZ EA 3/4 LB CO	3/ 4 LB CO PER CAS
0187	WINDSOR FOODS COMPANY	74625	892001E596388	CO	PASTA, TORTELLINI, CHEESE, PRECKD, FZN, 2 OZ EA , BULK, 12 LB CO	12 LB CO PER CASE
0187	WINDSOR FOODS COMPANY	74633	892001E614130	CO	PASTA TORTELLINI CHEESE P/C FZN TRI-COLOR W/O SAUCE 0.17 OZ EA 3/4 LB CO	3/ 4 LB CO PER CAS
0187	WINDSOR FOODS COMPANY	74697	892001E614126	CO	PASTA RAVIOLI MUSHROOM PORTABELLO P/C FZN W/O SAUCE SQUARE 0.57 OZ EA 2/5 LB CO	2/ 5 LB CO PER CAS
0187	WINDSOR FOODS COMPANY	74757	892001E596386	CO	PASTA, RAVIOLI, CHEESE, PRECKD, FZN, W/O SAUCE, JUMBO, 1.2 OZ EA, BULK, 10 LB CO	10 LB CO PER CASE
0187	WINDSOR FOODS COMPANY	74781	892001E596384	CO	PASTA, MANICOTTI, CHEESE, PRECKD, FZN, W/O SAUCE, 3 OZ EA, BULK, 10 LB CO	10 LB CO PER CASE
0187	WINDSOR FOODS COMPANY	74857	892001E612448	CS	PASTA TORTELLINI CHEESE PRECKD FZN TRI-COLOR 2.5 LB AVG 4/CASE	4/ 2.5 LB BAGS PER
0187	WINDSOR FOODS COMPANY	74948	892001E614123	CO	PASTA RAVIOLI CHEESE BRD P/C FZN W/O SAUCE W/MOZZ CHEESE & JALAPENOS 0.75 OZ EA	2/ 5 LB CO PER CAS
0187	WINDSOR FOODS COMPANY	77071	892001E614280	CS	PASTA LASAGNA CHEESE P/C FZN W/O SAUCE THREE LAYER 50/3.5 OZ EA	50/ 3.5 OZ EA PER C
0187	WINDSOR FOODS COMPANY	77602	892001E614125	CO	PASTA RAVIOLI FLORENTINE P/C FZN JUMBO RD 1.23 OZ EA 2/ 5 LB CO	2/ 5 LB CO PER CAS
0187	WINDSOR FOODS COMPANY	9112035	892001E614122	CS	PASTA MANICOTTI CHEESE P/C FZN W/O SAUCE 1/10.3 LB CS	1/10.3 LB CASE
0187	WINDSOR FOODS COMPANY	9120035	892001E614127	CO	PASTA STUFFED SHELLS CHEESE FZN 2.75 OZ 5/4.125 LB CO	5/4.125 LB CO PER C

0187	WINDSOR FOODS COMPANY	9145035	892001E614124	CO	PASTA RAVIOLI CHEESE P/C FZN W/O SAUCE SQUARE 0.58 OZ EA 2/4 LB CO	2/4 LB CO PER CASE
0271	CUISINE SOLUTIONS	1005773	894001E615110	CO	ENT MULT SERV FZN TORTELLINI CHEESE W/CREAMY PESTO SAUCE 4/5 LB CO	4/5 LB CO PER CASE
0317	AMERICAN BOUNTY	10432	892001E624804	CO	TORTELLINI, CHEESE, FZN, W/O SAUCE, 4/3 LB CO	4/3 LB CO
0370	CARLA'S PASTA	1040	892001E623502	BG	TORTELLINI, CHEESE, FZN, W/O SAUCE, 114 CT/LB, 4/3 LB BG	4/3 LB BG
0370	CARLA'S PASTA	1280	892001E617635	CS	MANICOTTI CHEESE & SPINACH P/C FZN W/O SAUCE 60/2.7 OZ EA	60/2.7 OZ EA PER C
0370	CARLA'S PASTA	1300	892001E608624	CS	PASTA STUFFED SJELLS CHEESE FZN W/O SAUCE 2.75 OZ EA 96/CS	96/ 2.75 OZ EA PER
0370	CARLA'S PASTA	5041	892001E608625	CO	PASTA TORTELLINI CHEESE PRECKD FZN W/O SAUCE 3 LB CO 4/CS	4/ 3 LB CO PER CASI
0370	CARLA'S PASTA	5060	892001E624495	CO	TORTELLINI, CHEESE & SPINACH, P/C, FZN, 4/3 LB CO	4/3 LB CO
0370	CARLA'S PASTA	5070	892001E609335	CO	PASTA TORTELLINI CHEESE PRECKD FZN 3 LB CO, 4/CASE	4/ 3 LB CO PER CASI
0370	CARLA'S PASTA	5366	892001E621567	CO	RAVIOLI, CHEESE, P/C, FZN, W/O SAUCE, JUMBO, SQUARE, 105/1.14 OZ EA, 3/2.5 LB CO	3/2.5 LB CO
0370	CARLA'S PASTA	5370	892001E609333	CO	RAVIOLI, CHEESE, P/C, FZN, W/O SAUCE, SQUARE, 0.65 OZ EA, 4/2 LB CO	4/2 LB CO PER CASE
0370	CARLA'S PASTA	5440	892001E608621	CO	PASTA RAVIOLI CHEESE PRECKD FZN W/O SAUCE 2.5 LB CO 3/CS	3/ 2.5 LB CO PER CA
0370	CARLA'S PASTA	5450	892001E617643	CO	RAVIOLI CHEESE P/C FZN W/O SAUCE JUMBO 1.19 OZ EA 4/2.5 LB CO	4/2.5 LB CO PER CA
0554	Seviroli Foods, Inc.	0-74847-20725-0	892001E622620	BG	PASTA, TORTELLINI, 5 CHEESE, FZN, MINI, 350/LB, 2/2.75 LB BG	2/2.75 LB BG
0554	Seviroli Foods, Inc.	0-74847-71122-1	892001E622622	BG	PASTA, TORTELLINI, CHEESE, P/C, FZN, 0.18 OZ EA, 2/5 LB BG	2/5 LB BG
0554	Seviroli Foods, Inc.	0-74847-71722-3	892001E622729	BG	TORTELLINI, CHEESE, P/C, FZN, IQF, TRI-COLOR, TFF, 90/LB, 2/5 LB BG	2/5 LB BG
0554	Seviroli Foods, Inc.	0-74847-73132-8	892001E622621	BG	PASTA, RAVIOLI, CHEESE, P/C, FZN, RD, 1.12 OZ EA, 2/5 LB BG	2/5 LB BG
0554	Seviroli Foods, Inc.	0-74847-78134-7	892001E622728	CS	PASTA, STUFFED SHELLS, CHEESE, P/C, FZN, IQF, TFF, 2 OZ EA, BULK, 1/10 LB CS	1/10 LB CS
	Appears Vegetarian					
	Eggplant Cutlets					
0015	NESTLE	13800-46450-00	894001E603028	CO	ENTREE, MULTI-SERV, FZN, EGGPLANT PARMESAN, W/MARINARA SAUCE, TOPPED W/MOZZARELLA	4/ 62 OZ CO PER CS

0085	ROSINA FOODS	48-40253-100	891501E591440	LB	EGGPLANT, BRD, SL, P/C FZN RD CUT 10 LB BG	1/10 LB BG PER CAS
0085	ROSINA FOODS	48-48001-100	891501E618408	CO	EGGPLANT BRD SL FC FZN CUTLET SHAPE SKLS 2/5 LB CO	2/5 LB CO PER CASE
0370	CARLA'S PASTA	5580	891501E617633	CO	EGGPLANT BRD SL FZN CUTLET SHAPE SKLS 1.8 OZ EA 2/5 LB CO	2/5 LB CO PER CASE
0370	CARLA'S PASTA	5585	891501E617632	CS	EGGPLANT BRD SL FZN CUTLET SHAPE CRISPY 2.29 OZ EA 1/10 LB CO	1/10 LB CO PER CAS
0370	CARLA'S PASTA	5595	891501E617634	CO	EGGPLANT BTRD P/C, FZN 3/8" WEDGE W/SKIN 1.06 OZ EA, 2/5 LB CO	2/5 LB CO PER CASE
0187	WINDSOR FOODS COMPANY		891501E614119		EGGPLANT SL BRD P/C FZN CUTLET SHAPE 2.6 OZ EA 2/5 LB CO	2/ 5 LB CO PER CASI
0271	CUISINE SOLUTIONS	1005320	894001E618763	CO	ENT-M EGGPLANT CUTLET W/SAUCE FZN W/TOMATOE SAUCE 4/5 LB CO	4/5 LB CO PER CASE
0184	MICHAEL ANGELO'S	408041	894001E596229	CO	ENTREE, MULTI-SERV, FZN, EGGPLANT PARMESAN, 5 LB TRAY CO	4/5 LB CO PER CASE
	Appears Vegetarian					
Italian						
0326	NISH	769203015968	894001E614744	CS	SWICH FZN STROMBOLI SPINACH & MOZZ CH 36/5.5 OZ EA	36/ 5.5 OZ EA PER C
0010	CONAGRA FOODS	77387-12407	894001E599617	CS	PIZZA-I, BK, STUFFED CRUST, FZN, CHEESE, W/CRUST ENROBED CH, 72/5.75 OZ WEDGES	72/5.75 OZ EA PER C
0379	GIORGIO FOODS	5203	894001E614414	EA	SANDWICH FZN POCKET CALZONE CHEESE 60/7 OZ EA	60/ 7 OZ EA PER CA
0379	GIORGIO FOODS	5717	894001E611309	CS	PIZZA PARBAKED IND SERV FZN CHEESE W/CHEESE BLEND 5 IN DIA 4.6 OZ EA 54/CASE	54/ 4.6 OZ EA PER C
0379	GIORGIO FOODS	6362	894001E612514	CS	PIZZA-I PAR/BK FZN CHEESE W/CHEESE BLD W/WHEAT CRUST 5 IN DIA 54/6 OZ EA	54/ 6 OZ EA PER CA
0379	GIORGIO FOODS	8022	894001E620988	CS	PIZZA-I, PAR/BK, FZN, MOZZ CH, WHEAT CRUST, 7 IN., 48 CT, 1/25.38 LB CS	1/25.38 LB CS
0501	IL TACO FOODS	0-79114-64422-6	894001E619095	CS	PIZZA-I, BK FZN SELF RISING CRUST 4 CH, MOZZ CHDR PROV & ROMANO 7" RD 24/12 OZEA	24/12 OZ EA PER CA

0513	NATION PIZZA PRODUCTS/CONNIE'S	10432	894001E620027	CS	PIZZA-M BK FZN CH W/CH BLD THIN CRUST 12/20.85 EA	12/20.85 EA PER CA
0513	NATION PIZZA PRODUCTS/CONNIE'S	10568	894001E620023	CS	PIZZA-I, BK, FNZ, CH, W/CH BLD, 48/9.25 OZ PG	48/9.25 OZ PG PER
0187	WINDSOR FOODS COMPANY	74922	892001E614121	CO	PASTA GNOCCHI POTATO P/C FZN 0.28 OZ EA 2/5 LB CO	2/ 5 LB CO PER CAS
0007	SIMPLOT	02046	894001E621241	CO	ENT SIDE-M, 9 GRAIN ORZO & SPINACH, FZN, 6/2.5 LB CO	6/2.5 LB CO PER CA
	Appears Vegetarian					
	Mexican/Southwest					
0015	NESTLE	13800-212238-00	894001E604679	CO	ENTREE MULTI-SERV LITE FZN SANTE FE STYLE RICE & BEANS 74 OZ CO 4/CASE	4/74 OZ CO PER CAS
0187	WINDSOR FOODS COMPANY	0990301	894001E624589	CS	ENCHILADAS, CHEESE, FZN W/O SAUCE 90/1.75 OZ EA	90/1.75 OZ EA PER
0187	WINDSOR FOODS COMPANY	5191201	894001E620613	CS	BURRITOS FZN BEAN & CHEESE 24/5 OZ EA	24/5 OZ EA PER CAS
0187	WINDSOR FOODS COMPANY	5900165	894001E624614	CS	ENCHILADAS, CHEESE FZN W/O SAUCE, MONTEREY JACK & CHDR BULK 60/2.5 OZ EA	60/2.5 OZ EA PER C
0214	S & K INDUSTRIES, INC.	071461031063	894001E617218	CS	ENCHILADAS CHEESE P/C FZN W/SAUCE 6" LG 48/4.5 OZ EA	48/4.5 OZ EA PER C
0260	MANN'S LLC DBA TASTE TRADITION	0-15094-09003-5	894001E619454	CS	ENCHILADAS, CHEESE, FZN W/GRN CHILI, MONTEREY JACK&ONIONS, 96/7 OZ EA	96/7 OZ EA
0260	MANN'S LLC DBA TASTE TRADITION	0-15094-50944-5	894001E619453	CS	ENCHILADAS, CHEESE, FZN, W/GRN CHILI, MONTEREY JACK &ONIONS,24/6 OZ EA	24/6 OZ EA
0368	M.C.I. FOODS, INC.	06574-10053	894001E617911	CS	ENCHILADAS CHEESE P/C, FZN W/SAUCE 48/4.5 OZ EA	48/4.5 OZ EA PER C
0317	AMERICAN BOUNTY	10287	894001E613709	CS	BURRITOS FZN BEAN & CHEESE P/BK IQF 72/4 OZ EA	72/ 4 OZ EA PER CA
0317	AMERICAN BOUNTY	10299	894001E613712	CS	ENCHILADAS CHEESE FZN W/O SAUCE IQF 72/4 OZ EA	72/ 4 OZ EA PER CA

0152	BASIC AMERICAN FOODS	54914	891501E625061	BG	BEANS, REFRIED, W/WHOLE BEANS, SS, VEGETARIAN STYLE, 6/27.09 OZ BG	6/27.09 OZ BG PER
0512	DEL REAL FOODS	499	894001E620061	CO	ENT SIDE-M MEXICAN RICE & VEGS FZN 8/3 LB CO	8/3 LB CO PER CASE
	Appears Vegetarian					
PIEROGIES						
0126	MRS. T'S PIEROGIES	41164-00346	894001E622274	BG	PIEROGIES, P/C, FZN, SPINACH & FETA CHEESE, 4/6 LB BG, 288/1.34 OZ EA	4/6 LB BG
0126	MRS. T'S PIEROGIES	41164-00370	894001E593329	BG	PIEROGI, PRECKD, FZN, POTATO&CHEDDAR CHEESE 1.4 OZ EA IQZ 72/BG 4 BG/CS	4 BGS PER CASE
0126	MRS. T'S PIEROGIES	41164-00833	894001E622150	BG	PIEROGIES, P/C, FZN, MINI, POTATO & AM CHEESE, WHL GRAIN DOUGH, 4/3.25 LB BG	4/3.25 LB BG
0126	MRS. T'S PIEROGIES	41164-00834	894001E593334	BG	PIEROGI, PRECKD, FZN MINI, POTATO & CHEDDAR CHEESE, 0.5 OZ EA IQF 100/BG 4 BG/CS	4 BGS PER CASE
0126	MRS. T'S PIEROGIES	41164-00836	894001E618036	BG	PIEROGIES P/C FZN MINI POTATO & CHDR CHEESE W/RST ONION & BTR SC 4/4.05 LB BIBG	4/4.05 LB BIBG PER
0126	MRS. T'S PIEROGIES	41164-00837	894001E618035	BG	PIEROGIES P/C FZN MINI POTATO & CHDR CHEESE W/MARINARA SAUCE 4/4 LB BIBG	4/4 LB BIBG PER CA
0126	MRS. T'S PIEROGIES	41164-00838	894001E593335	BG	PIEROGI, P/C BIBG, FZN MINI POTATO & CHDR CHEESE W/CHEESE SAUCE 4/4 LB BG	4/4 LB BGS PER CAS
0126	MRS. T'S PIEROGIES	41164-00839	894001E618034	BG	PIEROGIES P/C FZN MINI POTATO & CHDR CHEESE W/ENCHILADA SAUCE 4/4 LB BIBG	4/4 LB BIBG PER CA
0379	GIORGIO FOODS	2363	894001E621276	BG	PIEROGIES, RAW, FZN, POTATO & CH, 72 CT, 4/6.5 LB BG	4/6.5 LB BG
0379	GIORGIO FOODS	2681	894001E620973	BG	PIEROGIES, RAW, FZN, POTATO & ONION, 72 CT, 4/6.5 LB BG	4/6.5 LB BG
	Vegetarian					
Egg Rolls						
0187	WINDSOR FOODS COMPANY	52217	894001E596400	CS	EGG ROLL, CHINESE, FZN, VEGETARIAN , 3 OZ EA, 100/CO	100/3 OZ EA PER CA
	Vegetarian					
Asian						

0192	INNOVASIAN CUISINE	40419	894001E619471	CS	ENT-KIT-M VEG LO MEIN FZN 4 BG/CS 4/1.5LB NDLS 4/1.5LB VEG BLD 4/1LB SC 1/16LBCS	1/16 LB CS
0345	SUNRISE FOODS, INC.	37-1080	894001E622141	CS	ENT KIT MULTI SERV FZN LO MEIN VEG 5 BGS/CS (3/1LB NODLS, 1LB SC,1/6.5 LB VEG	5 BGS PER CASE
	SCHWAN SALES		894001E099643		ENTREE, MULTI-SERVING, BOIL-IN-BAG, FROZEN, LO MEIN	
0427	S & H FOODSERVICE BROKER LLC	BP906	894001E619809	CO	ENT SIDE-M, FRIED RICE, VEG, FZN, 4/5 LB CO	4/5 LB CO
0427	S & H FOODSERVICE BROKER LLC	BP908	894001E619807	CS	APTZR, FZN, SPRING ROLLS, VEG, 200 PIECES, 1/18.75 LB CS	1/18.75 LB CS
0192	INNOVASIAN CUISINE	29904	894001E612490	BG	ENTREE SIDE DISH MULTI SERV BOIL IN BAG FZN FRIED RICE VEG W/O MSG OR TRANS FAT	12/ 2 LB BAGS PER C
0252	RASTELLI FINE FOOD	52671	891501E624376	PG	VEG, MIXED, IQF, ORIENTAL STIR FRY, 6/2 LB PG	6/2 LB PG
0340	IMPERIAL SALES COMPANY	12412- 01025	891501E622972	BG	VEG, MIXED, FZN, 5-WAY ORIENTAL STIR FRY BLD, 12/2 LB BG	12/2 LB BG
0007	SIMPLOT	100711796 76669	891501E095718	CO	VEG, MIXED ORIENTAL FZN, STIR FRY 12/32 OZ CO	12/32 OZ CO PER CS
0010	CONAGRA FOODS	443001266 6	895001E620981	CO	SAUCE STIR FRY 1/1 GL CO	1/1 GL CO PER CASE
0007	SIMPLOT	100711718 8131	891501E624086	BG	VEG, MIXED, FZN, ORIENTAL BLD, GR BEANS/BROC/ONION/PEPR/MUSHROOM, 12/32 OZ PG	12/32 OZ PG
	Appears Vegetarian					
Meal Kits						
0058	G. A. FOOD SERVICES	MO28	894001E623251	EA	LUNCH MEAL KIT, W/DK, SS, RED PEPPER HUMMUS, 1 WHL WHEAT BRD, W/ETC, 18/24 OZ EA	18/24 OZ EA
0058	G. A. FOOD SERVICES	MO31	897001E596345	EA	MEAL KIT W/DRINK, RAVIOLI, 44 OZ EA, 18/CS	18/44 OZ EA PER CA
0058	G. A. FOOD SERVICES	MO10340	897001E623980	EA	MEAL KIT W/KIT-I, PB & J, SS, KOSHER, W/ETC, 12/21 OZ RA	12/21 OZ EA PER CA

0362	VALLEY FOODS INC.	HSS53	897001E620773	EA	MEAL KIT W/DRINK BEAN BURRITO SS TRTLA CKIE PTTO SKNS FRUIT GUSHER TRL MX JUICE	16/27.2 OZ EA
0417	RED CLOUD FOOD SERVICE INC.	RC480	897001E624715	EA	LUNCH MEAL KIT W/DRINK, SS, (18) HUMMUS, W/ETC, 18/30.13 OZ EA	18/30.13 OZ EA
0544	Duty Bound LLC	80066	897001E622715	EA	MEAL KIT W/DRINK-I, PB & J, SS, 18/26.6 OZ EA	18/26.6 OZ EA
0490	HEATER MEALS	72710	897001E618404	CO	MEAL KIT W/DRNK VEG PASTA FAGOLI SS FLMLFS FD HTR SLT WTR PCH 12/21.9 OZ CO	12/21.9 OZ CO PER
0058	G. A. FOOD SERVICES	MOBPS110	897001E623981	EA	MEAL KIT W/DRINK-I, BKFST CEREAL SS KOSHER W/ETC, 8/22 OZ EA	8/22 OZ EA PER CAS
0058	G. A. FOOD SERVICES	MO39	894001E623178	CO	BKFST MEAL W/JUICE, SS, CEREAL, FRUIT CUP, GRANOLA BAR, MILK, ETC, 18/36.5 OZ CO	18/36.5 OZ CO
0058	G. A. FOOD SERVICES	MO43	894001E604517	CO	BREAKFAST MEAL W/DRINK FZN LG BAGEL CR.CH.(2) LG GRAN.BAR PUDNG FRT. 18 OZ 30/CS	30/18 OZ CO PER CA
0058	G. A. FOOD SERVICES	MO44	894001E604518	CO	BRKFST MEAL W/DRINK FZN BLBRY MUFFIN GR.BAR CHOC PUDNG FRT. 18 OZ 30/CASE	30/18 OZ CO PER CA
0362	VALLEY FOODS INC.	HSSB6	897001E623479	EA	MEAL KIT W/DRNK,BKFST,SS,MINI WHT CREL,UHT MLK,FRT,JUIC,PB&JLLY,BAGL,CRL BAR/RSN	16/32.8 OZ EA
0362	VALLEY FOODS INC.	HSSB7	897001E623480	EA	MEAL KIT W/DRNK,BKFST,SS,HNY OAT CREL,UHT MLK,FRT,JUIC,PB&JLLY,BAGL,CREL BAR/RSN	16/31.8 OZ EA
0362	VALLEY FOODS INC.	HVPSB10	897001E623481	EA	ML KT W/DRNK VRTY BKFST SS (8) MNI WHEAT (8) HNY OATS UHT MLK FRT JC PB & JLLY	16/32.3 OZ EA
0417	RED CLOUD FOOD SERVICE INC.	RC475	897001E624716	EA	BKFST MEAL KIT W/DRINK, SS, VARIETY, ASSORTED CEREAL, W/ETC., 18/33 OZ AVG	18/33 OZ AVG
0490	HEATER MEALS	72410	897001E618401	CO	MEAL KIT W/DRNK SS BKFST PNCK W/BLBRY TPG&BAC FLAMLES FD HTR SLT WTR PCH	12/15 OZ CO PER CA
0490	HEATER MEALS	72960	897001E625447	CO	MEAL KIT W/DRINK-I, VARIETY, OATMEAL, SS, PL/MAPLE/APPLECIN/BLBERY, 12/13.72 OZ	12/13.72 OZ CO
0530	AMERIQUAL GROUP, LLC	10020	897001E620671	CS	MEAL KIT W/DRINK VARIETY PB & J, SS, 12 CT, 1/17 LB CS	1/17 LB CS
0543	One Source Nutrition LLC	0 949224643 4 7	897001E623733	EA	MEAL KIT W/DRINK-I, APPLE CIN OATMEAL, SS, 12/2.25 LB EA	12/2.25 LB EA

